



Do you suffer very often from crashes resulting in lots of wasted time for re-installation??

Do you believe it? All computer systems can be restored by an external USB HDD, which can solve your problem right away.

A Fast Recovery System using the external USB HDD

The Most Convenient Back-up System

The external USB HDD is a kind of necessary accessory nowadays. Just make system backups through PCClone EX into external USB HDD; it can restore PC systems easily without backup programs or burning of a mass of CDs. PC users could freely recover computer system by USB HDD as soon as they meet any PC problems.

The Easiest Operating Interface

FNet PCClone EX hot key design produces access to USB HDD in seconds. In only one step, the system backup or recovery can be completed fast and easily. All operating functions are designed to be a diagrammatic interface for easy use. It doesn't require special skills to setup; anyone can do it.

The Fastest Backup & Recovery

FNet PCCloneEX is currently the fastest recovery product. FNet R&D team designed specialized system backup & patent recovery tech to significantly shorten the backup time; and the recovery function can be directly through the external USB HDD booting and immediately goes on the recovery screen. It doesn't need a boot disk nor waiting.

Most Security for Backup & Recovery

Through FNet Fast System Backup & Restore Technology, the operating system can be backed up to USB HDD by Sector-Level Backup. As soon as users want to restore; the restore screen can display right away through USB boot without boot disk or wasted time. Meanwhile, PCClone will verify whether any errors occurred before restoration that can assure full files restore. Other backup software tools on the market use the file backup method, which runs the risk of data loss.

The Highest Compatible Product

Configuration differences of every computer results in lower compatibility between backup & recovery system and computers so some of computers can only access backup function. This is inconvenient for PC users who would like to use both functions. Only PCClone EX provides a CD for USB boot; in case their computers don't support USB or USB-HDD boot. It doesn't matter! Through the USB slot and CD, the system can be restored. Higher compatible PCClone EX is the most reliable and best choice for PC users.



Contents

• PCClone EX Overview	1
• Read before installation	3
• System Requirements	3
• User Notice	3
• Copyright	4
• Software installation	4
• Create Partition	7
• One Button Backup	9
One Button System Backup	9
One Button File Backup	11
• Quick Launch	13
Quick System Backup	14
Quick File Backup	15
• System Backup	16
System Backup	17
Remove System Backup	19
FAT32 Format Utility	20
• System Restore	22
System Restore	22
The Restoration Options	24
• File Backup	25
File Backup	25
File Restore	27
Erase File Backup	28
• File Manager	29
• Setup	30
• Other	31
• Technical Support and Services	32
• Contact us	33

Read before installation

- The USB Host 2.0 is compatible, but the USB Host1.0 and 1.1 can not be supported.
- Only one operating system in one computer can be backed up to the USB HDD through PCClone EX.
- When users execute the System Backup of PCClone EX, the type of file system in the first partition of USB HDD must be FAT32.
- When users execute the File Backup of PCClone EX, the type of file system in the first partition of USB HDD can be either FAT32 or NTFS.
- In order to insure safe and complete file backup, executing the "Verification" mechanism is recommended.
- When users operate the PCClone EX, only Administrator can be supported to login; the Guest or any authorized account of log in is not available.
- Some of resident programs (e.g. anti-virus software) at the notification area will affect the operating of System Backup, please possibly close these programs before installing PCClone EX that is recommended.
- If there are two chipsets in your computer, only one of them can be selected when you do the System Restore; in case of the dialog window pops up "USB DISK NOT FOUND", please try to change another USB slot.

System Requirements

- Pentium computers or 100% compatible computers.
- Support OS: Microsoft Windows 98SE / Me / 2000 / XP (32bit)/ Vista(32bit) .
- CPU Pentium or above.
- 128 MB RAM.
- Display card: compatible with VESA standard.
- USB 2.0 enable system.
- Mother board BIOS support USB-HDD or CD-ROM boot.
- CD-ROM drive.
- An external USB (2.0) hard disk.

User Notice

- Except in case of improper use, we provide a 1-year guarantee of free service.
- If this product is defective, please return it to the dealer from whom the product was originally purchased, together with your original sales receipt for replacement.
- FNet Co., Ltd. is not liable for any consequential, incidental or indirect damages(including damages for indirect personal injury, loss of business profits, business interruption, loss of business information and the like) arising out of the use or inability to use this product.
- FNet Co., Ltd. will not accept returns of opened packages.

Copyright

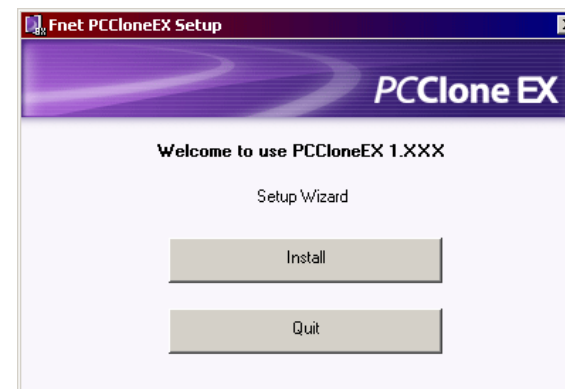
The user is responsible for all results. FNet Co., Ltd owns this product and its relative information; we grant you no right to this product. FNet Co., Ltd. also owns all unauthorized rights in this book.

All rights reserved. No part of the FNet PCClone EX may be copied without the writing permission or authorization of FNet Co., Ltd, who prohibits the sell · rental · exchange · lending · exhibition · revision · destruction, etc. of the product, as there actions could infringe on FNet's rights. FNet also prohibits anyone from re-compiling or reverse engineering of the software, or decoding of our product. Covering or removing the copyright and trademark description is not allowed.

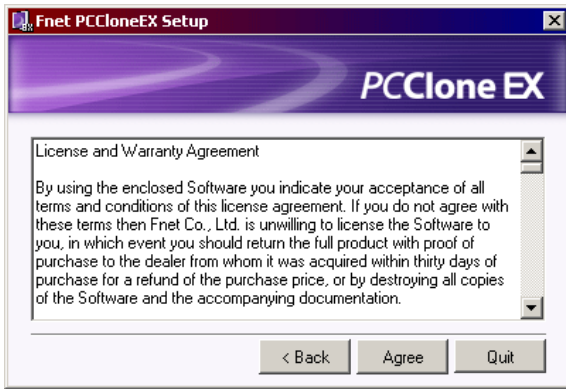
FNet Co., Ltd. owns the FNet PCClone EX's copyright and patent. This product and its manual possess multiple countries' copyright & patent. The trademarks of FNet PCClone EX and FNet are registered by FNet Co., Ltd. and Future Net U.S.A. Corporation.MS-DOS · Microsoft · Windows 2003 · Windows XP · Windows 2000 · Windows NT · Windows ME · Windows 98 · Windows 95 · Windows 3.1 are trademarks of Microsoft Corporation.Other pictures · product and company names, mentioned herein may be the trademarks of their respective owners.

The information in this document is subject to change at anytime without notice. All the product names used herein are own by FNet Co., Ltd unless otherwise noted.

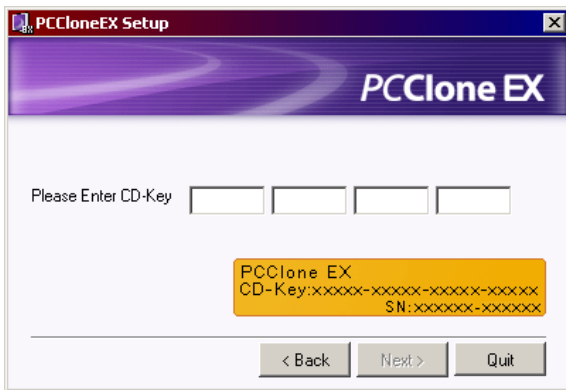
Software installation



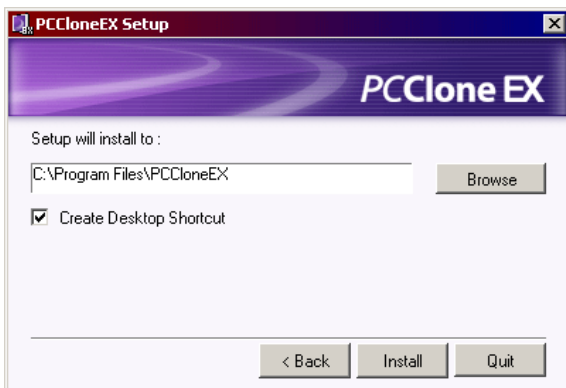
1. Insert PCCloneEX installation CD into the CD drive, it will automatically access PCCloneEX Wizard.
(If the installation Wizard doesn't appear, please click the CD-drive icon in My Computer to execute the "Setup.exe")
2. Click " install".



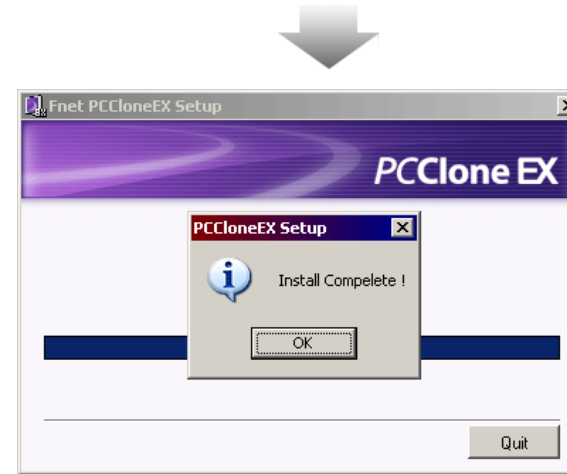
3. Before installing, please read the License and Warranty Agreement.
4. Click "Agree" for next steps.



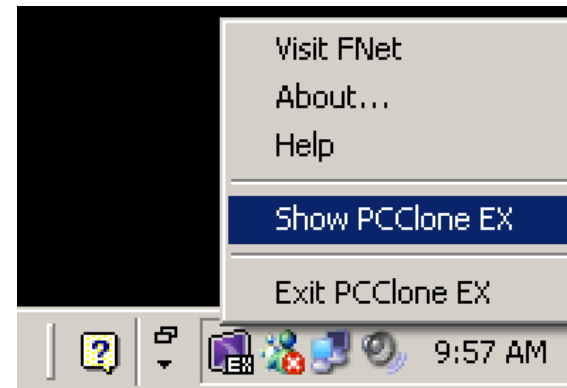
5. Key in the digital characters that is shown on the yellow label of licensing code.



6. Select the installation path and click "Install".



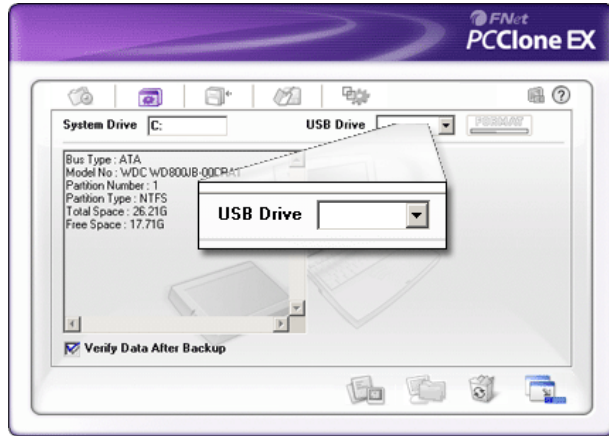
7. PCClone EX installation is completed, and click "OK" to quit.



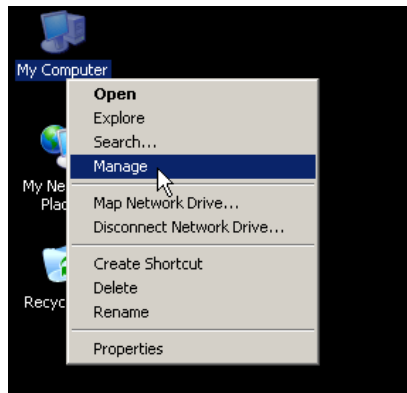
8. The "PCClone EX" icon will be displayed at the notification area after installation, double-click the icon or right-click the mouse to show and execute its functions.

Create Partition

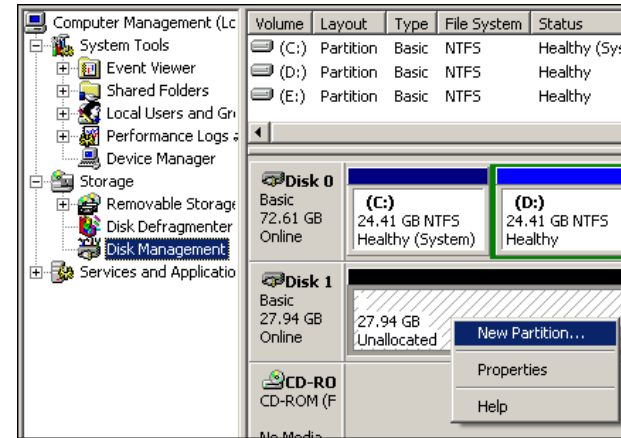
If your USB HDD has partitioned already, please skip the steps below and go on next section.



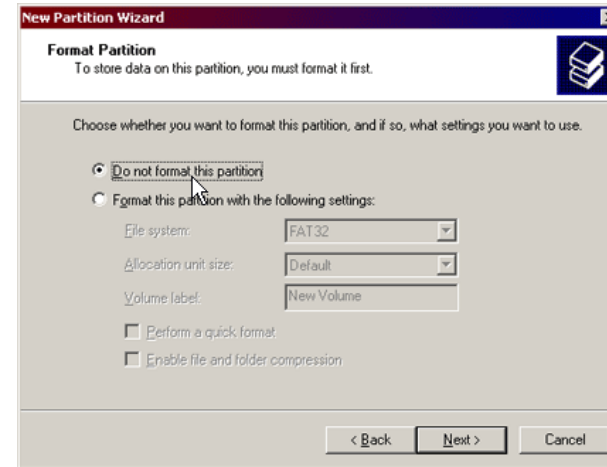
1. Connect the USB HDD with your computer and then turn on the USB power.
2. Execute PCClone EX.
3. If there is not a drive letter is displayed at the box list of the USB Drive, the USB external HDD can be a brand new or the HDD may hasn't been partitioned yet. If so, please create partitions for your USB HDD before using PCClone EX.
(When the USB drive letter can be displayed, please skip "Create Partitions" and go on next section.)



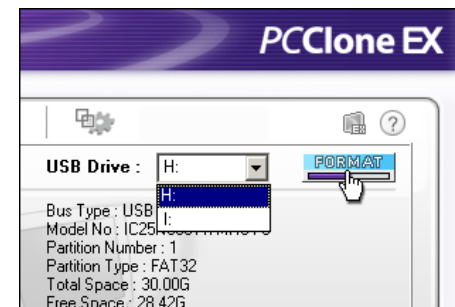
4. Right-click the "My Computer", and click the "Manage".
(Or click "Start" -> "Control Panel" -> "Administrative Tools" -> "Computer Management")



5. Click the "Disk Management" as the left highlight, and then the Disk Management will be displayed several partitions as the right side of interface.
6. Right-click the disk of "Unallocated", and click the "New Partition".
(How does user know the partition of "Unallocated" is the same as the USB HDD? Please try to unplug the USB HDD and reconnect it and see if the Unallocated partition is gone and appeared again that will be the same.)



7. Execute the "New Partition Wizard".
8. Select the option of "Do not format this partition".
9. follow up the setting and complete the Disk Management.



10. After the disk is managed, the USB drive letter will be displayed.
11. Move on "[FNet Utilities FAT32 Format](#)" and click the "FORMAT" to format your USB HDD.
(Please refer to the section of "[FNet Utilities FAT32 Format](#)" in detail if you need.)

One Button System Backup

One Button backup function only supports the external HDD enclosure with the button design-- execute System Backup by pressing the button on the USB enclosure without complicated operating.

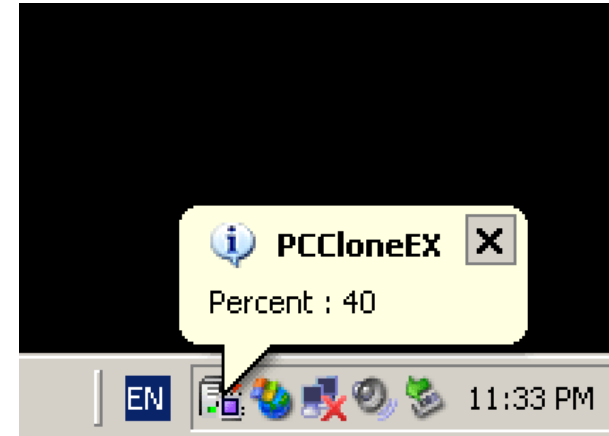
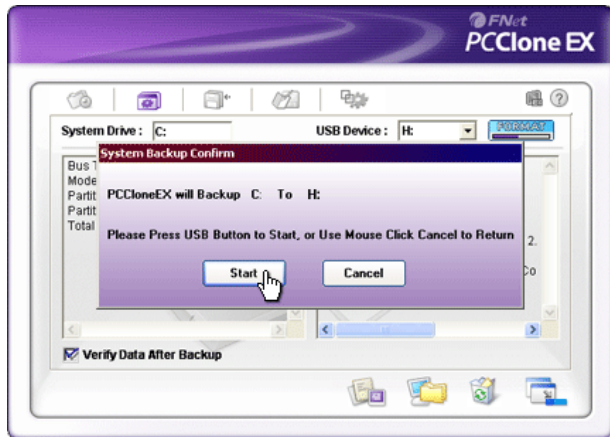
Note: when you do the backup by buttons, the PCCloneEX must be installed already and the icon of PCCloneEX has displayed at the notification area. (if you are a new user, please go on "[System backup](#)" and "[Setup](#)" to do the setting in advance.)

The USB driver of Win 98SE/ME to the button trigger support do not have identical standard, therefore, the button trigger support under the Win98SE/Me workstation is uncertainly available.

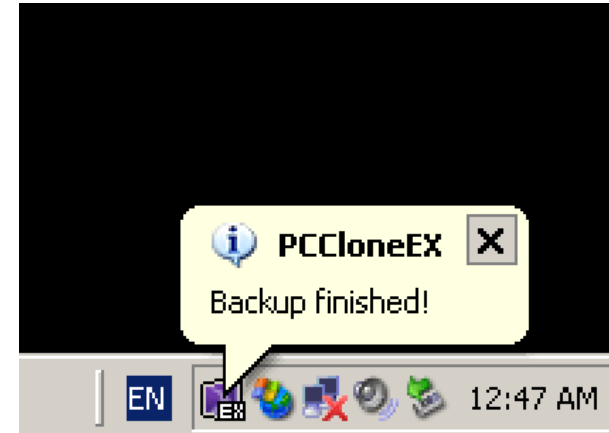


1. Connect the USB HDD with your computer and then power on the USB HDD.
2. Execute PCCloneEX.
3. Press the button around **3** seconds.
(If your external device has **two buttons**, please press the button of "System Backup".)

4. Click the "start" when the dialog window jumps up.



5. When the backup is process, PCClone EX icon will be blinking at the notification area. There is a dialog box will be displayed every single 10 percentages.



6. After the system backup is completed, PCClone EX will be displayed at the notification area and appeared the "backup finished".

One Button File Backup

One Button backup function only supports the external HDD enclosure with the button design-- execute File Backup by pressing the button on the USB enclosure without complicated operating.

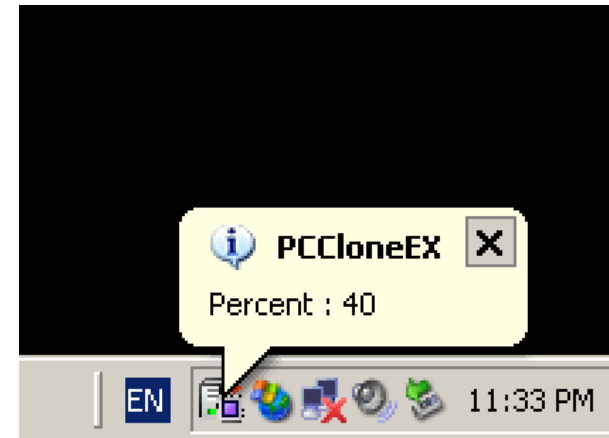
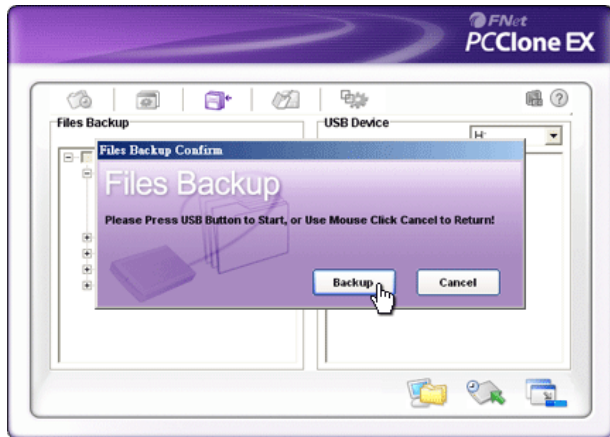
Note: when you do the backup by buttons, the PCCloneEX must be installed already and the icon of PCCloneEX has displayed at the notification area. (if you are a new user, please go on "[File backup](#)" and "[Setup](#)" to do the setting in advance.)

The USB driver of Win 98SE/ME to the button trigger support do not have identical standard, therefore, the button trigger support under the Win98SE/Me workstation is uncertainly available.

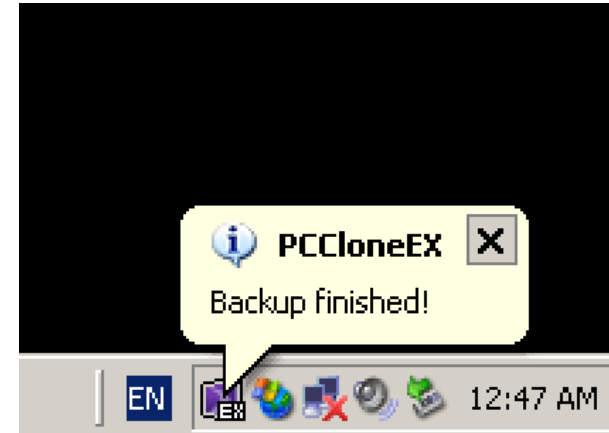


1. Connect USB HDD with your computer and then power on USB HDD.
2. Execute PCCloneEX.
3. Press the button on the external enclosure.
(If your external device has **two buttons** , click the button of "File Backup" .)

4. Click the "backup" when the dialog window jumps up.

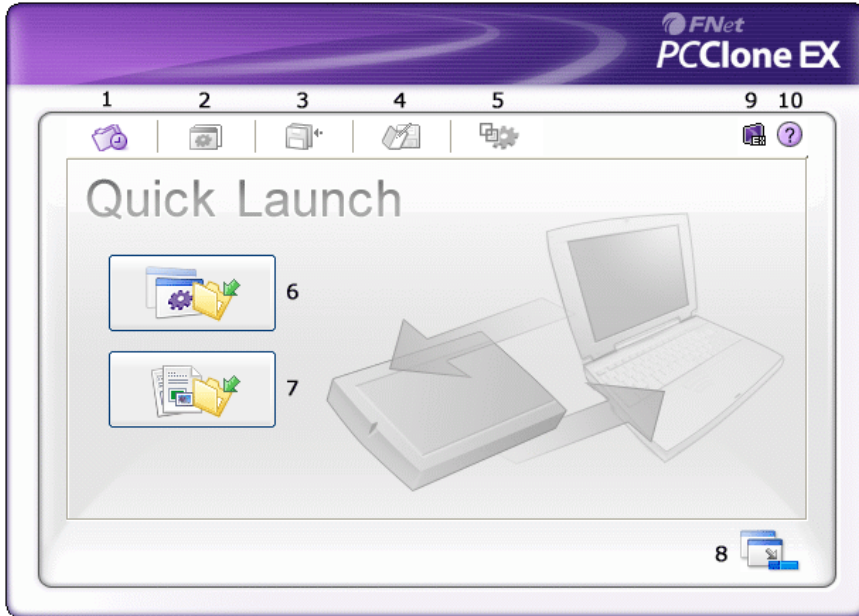


5. When the backup is process, PCClone EX icon will be blinking at the notification area. There is a dialog box will be displayed every single 10 percentages.



6. After File Backup is completed, PCCloneEX icon will be displayed at the notification area and appeared "backup finished".

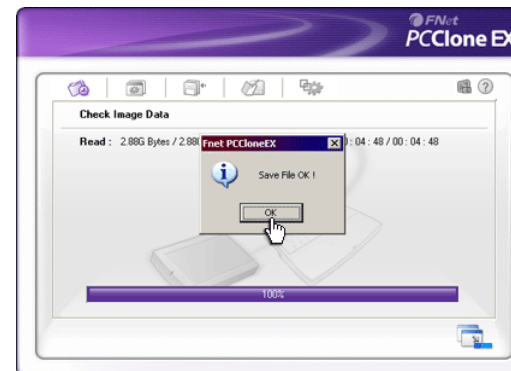
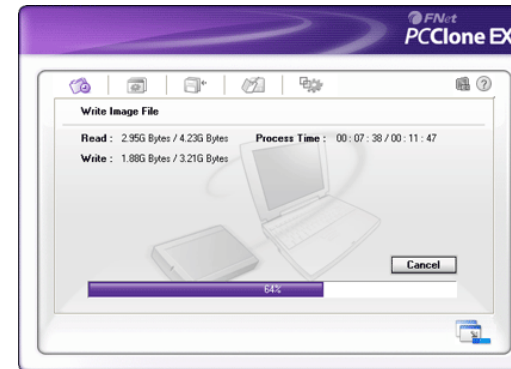
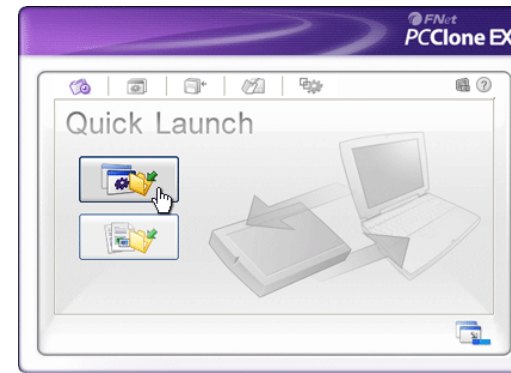
Quick Launch



1. [Quick Launch.](#)
2. [System Backup.](#)
3. [File Backup.](#)
4. [File Manager.](#)
5. [Setup.](#)
6. System Backup.
7. File Backup.
8. Minimized.
9. [About.](#)
10. [Help.](#)

Quick System Backup

Operating System Backup by Quick Launch or "[hot key](#)" without any complicated setting. (if you are a new user, please go on "[System Backup](#)" and "[Setup](#)" to do the settings in advance.)



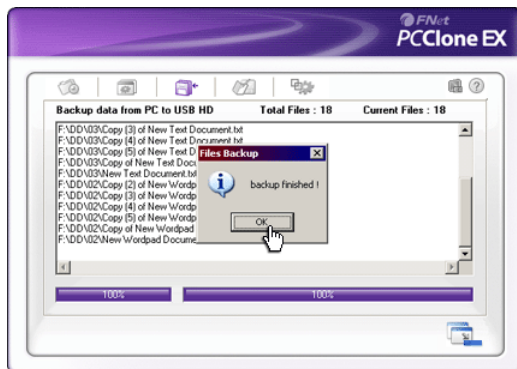
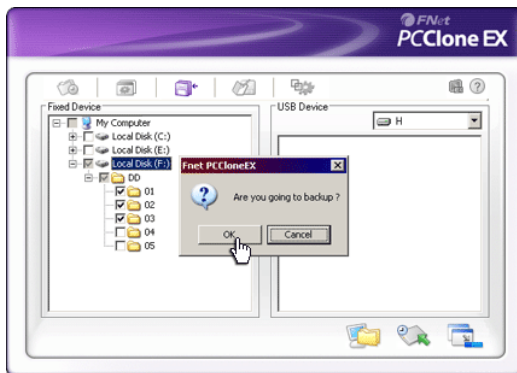
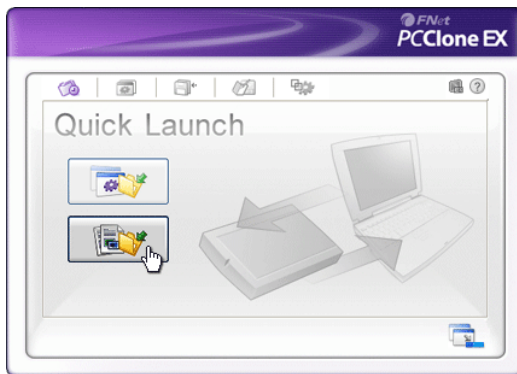
1. Connect the external USB HDD with the computer, and power on the USB device.
2. Execute PCClone EX.
3. go to the "Quick Launch" menu.
4. Click "System Backup".
5. Click "OK" when a dialog window jumps up.
(Also, the [hot key](#) is available if you have done the setting.)

6. The backup is process now and shows the process time and estimates the completed time.

7. When the backup is done, click "OK" for saving files! (The system files have been successfully completed into the USB HDD.)

Quick File Backup

Operating File Backup by Quick Launch or “hot key” without any complicated setting. (If you are a new user, please move on “File Backup” and “Setup” to do the settings in advance.)

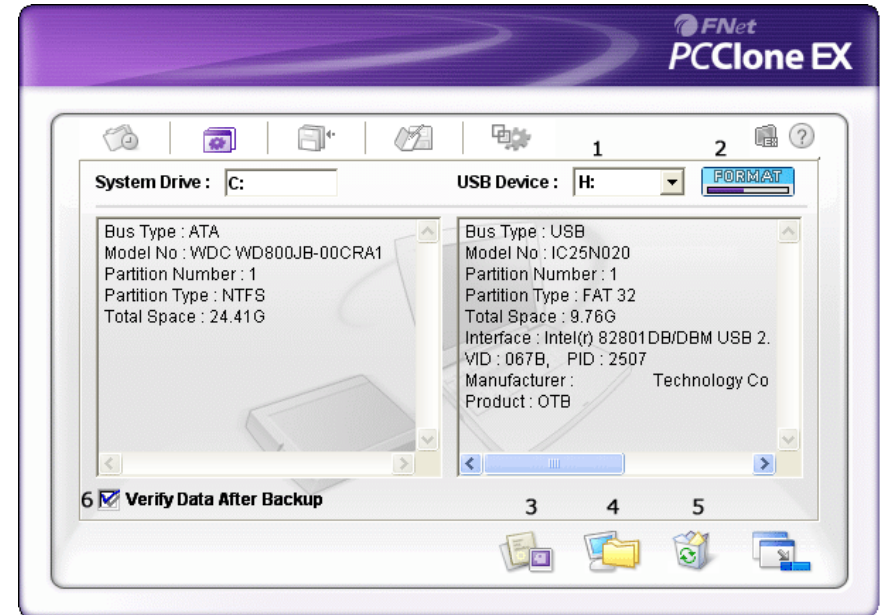


1. Connect the external USB HDD with the computer, and power on the USB device.
2. Execute PCClone EX.
3. Go to the "Quick Launch" menu.
4. Click "File Backup".
(Also, the [hot key](#) is available if you have done the setting.)

5. Click "OK" when the dialog window jumps up.

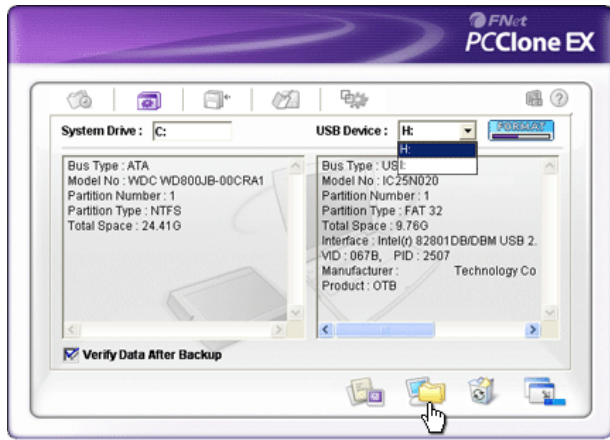
6. The backup is process now and shows the process time and estimates the completed time.
7. Click "OK" when file backup is done. (The file backup has been successfully completed into the USB HDD.)

System Backup

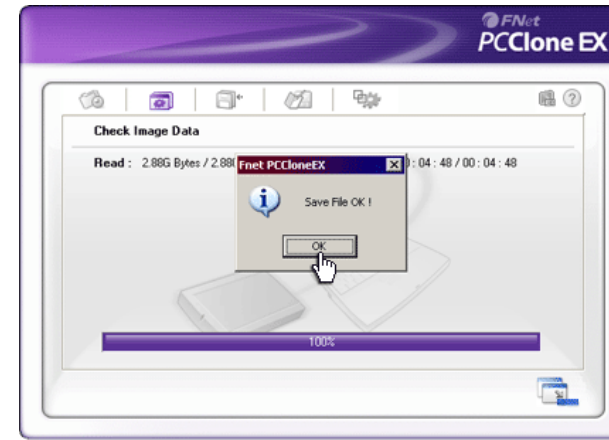


These icons meaning are as below:

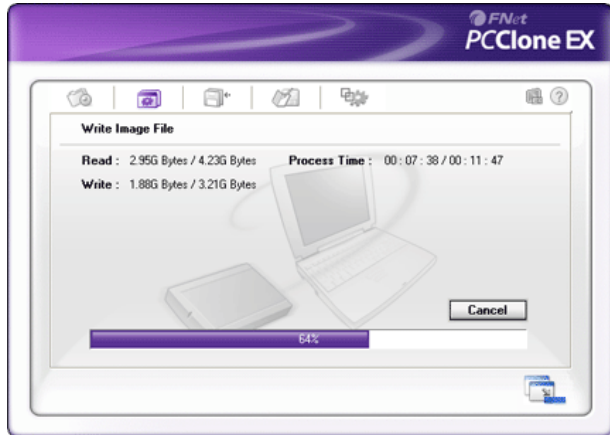
1. **USB Device:** if there are 2 more USB devices (physical HDD) are connected with the computer, the drive letters will be appeared in the list box, and users can select a drive letter they want to restore their system backup.
No matter how many partitions in the USB HDD are created; the first partition of USB drive can be displayed only, meanwhile, only an operating system can be backed up to the first partition via PCCloneEX. Before operating the backup, please make sure the capacity in the first partition is sufficient.
2. **FAT32 Format:** FNet FAT32 format utility.
3. **Verify:** verifies any error of the system backup data in the USB HDD.
4. **Backup:** "system Backup".
5. **Remove:** delete the backed up system data from the USB HDD.
6. **Verify Data After Backup:** verifies immediately any error of the backed up system data after system backup. (Check this verification is recommended.)



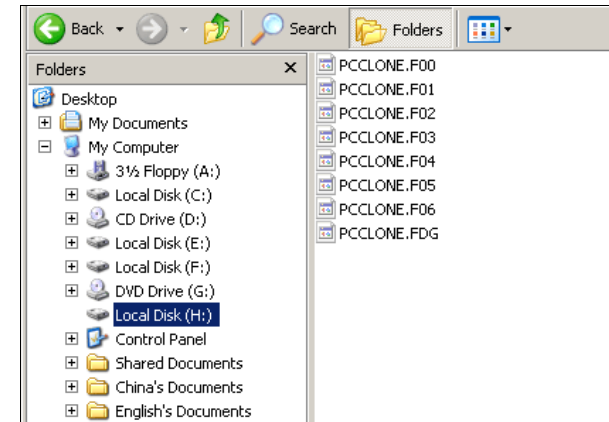
1. Connect the USB HDD with computer and power on the USB device.
2. Execute PCClone EX.
3. Click "Backup System" menu.
4. Choose one drive of USB HDDs you want to retain the system backup in there if you have 2 more USB HDDs.
5. Check the tick box in front of "Verify Data After Backup", which verifies immediately any error of the backed up system data after system backup. (Check this verification is recommended.)
6. Click the icon of "Backup" to start.



8. Click "OK" for saving files when the backup is completed! (The system files have been successfully completed through PCCloneEX into the USB HDD.)

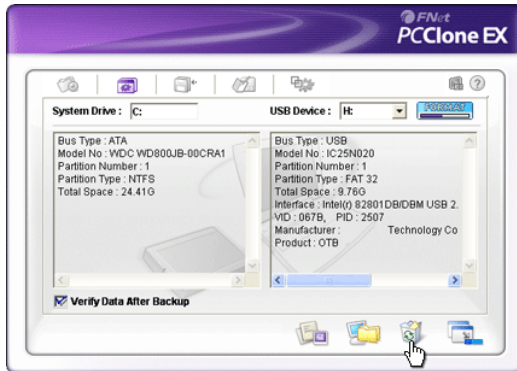


7. The system backup is process now. (It shows process time and estimates the completed time.)

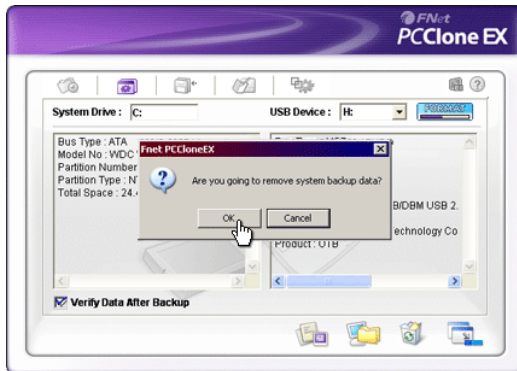


9. Under the root directory "G" drive is displayed hidden folders named "PCCloneEX.XX", all system files are located in there, don't delete them imprudently.

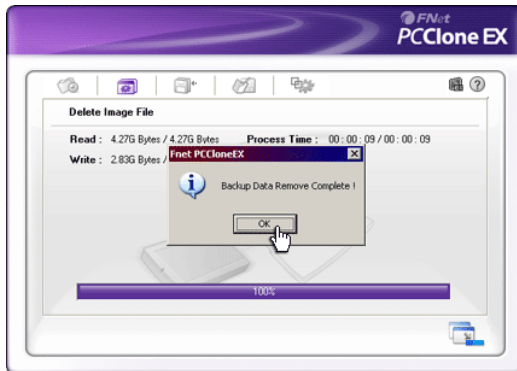
Remove System Backup



1. Connect the USB HDD with the computer, and power on the USB HDD.
2. Execute PCCloneEX.
3. Go to the "System Backup" menu.
4. Select the icon of "Remove".



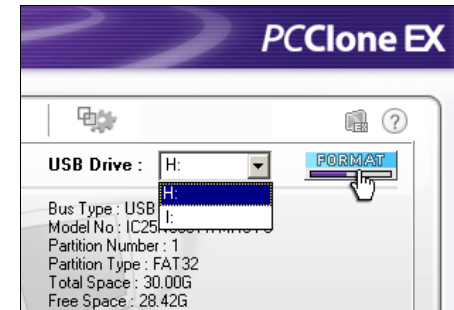
5. Click "OK" when the dialog window jumps up.



6. Click "OK" when the backed up data have been removed from the USB HDD.

FAT32 Format Utility

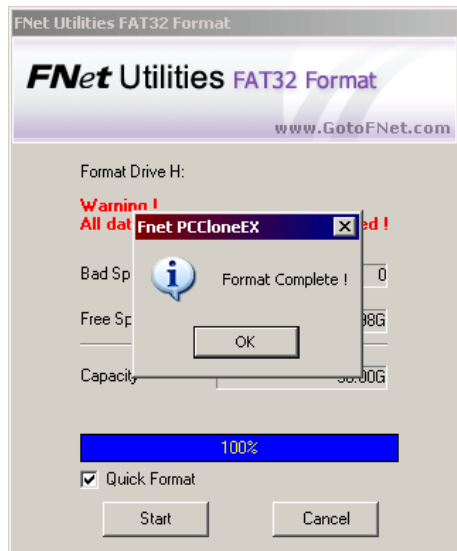
Most external HDD users would like to have bigger capacity to keep their myriad data day after day. Generally, Windows 2000/ XP providing the format utility only can supports the HDD capacity under 32GB (that is why it calls FAT32), currently PCCloneEX offers a utility named "FNet Fat 32 format" which the maximum format of the USB HDD can be supported up to 4 TB; only click "format" button, the selected USB HDD will be formatted quickly. (Note: all data in your selected USB drive will be deleted after clicking this "Format" button.)



1. Connect the USB HDD with the computer and power on the USB device.
2. Execute PCCloneEX.
3. Go to "System Backup" menu.
4. Select an USB drive letter for formatting.
5. Press "Format" button.



6. Click "Start" when you see "FNet Utilities FAT32 Format" utility.

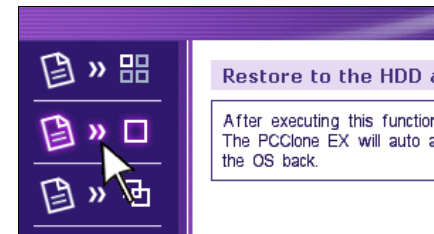
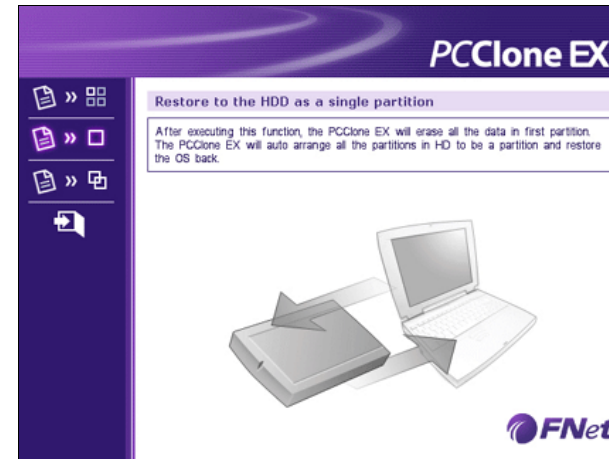


7. It is process now.

8. Click "Ok" after it is completed.
(The selected USB drive has been formatted to be FAT32 file system.)

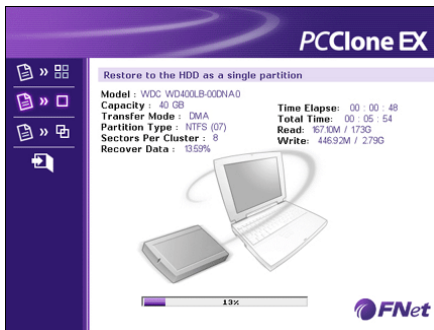
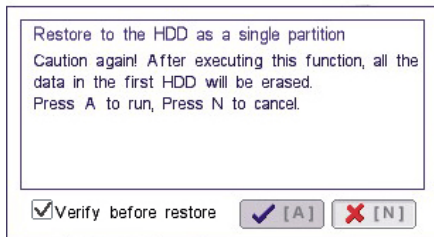
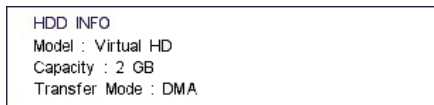
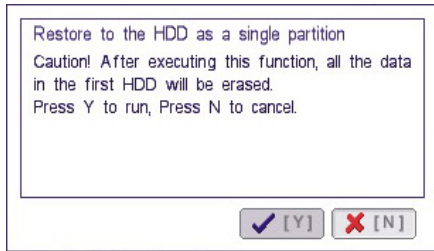
System Restore

Built-in Mainboard	USB Add-on card	Methods
USB 2.0	No	The USB HDD connects with the USB port of motherboard, and then the first boot device on BIOS setting should be the USB HDD or CD-ROM.
USB 2.0	USB 2.0	There are three methods for your reference: 1. the USB HDD connects with the USB port of motherboard, and then the first boot device on the BIOS setting should be the USB HDD or CD-ROM. 2. the USB HDD connects with the port of USB add-on card, and then the first boot device on the BIOS setting should be the CD-ROM. 3. the USB HDD connects with the port of USB add-on card, and then disable the USB Controller of BIOS; meanwhile, the first boot device on the BIOS setting should be the CD-ROM. (Please try one of them that can be available to you.)
USB 1.0	USB 2.0	The USB HDD connects with the port of USB add-on card, and then the first boot device on the BIOS setting should be the CD-ROM.
No	USB 2.0	USB HDD connects with the port of USB add-on card, and then the first boot device on the BIOS setting should be the CD-ROM.



1. Plug the external USB HDD into the computer, and turn on the power.
2. The first boot device on the BIOS setting should be the USB HDD. (if your computer doesn't support the USB HDD, you can use the CD as attached FNet PCClone EX CD instead of; and then the first boot device on the BIOS setting must be changed to be the CD bootable.)
3. See the PCClone EX's restore interface. (There are 4 options on the left side of PCClone EX interface; the detailed specification for Option 1 ~3 please refer to [Restore Options](#); the Option No.4 is Exit.)

4. Select one of options you like. (The option 2 of [Restore Options](#) is an example we instantiated now.)



5. Following to the option 2, the system files will be restored to the local disk which will be a single partition by PCClone EX. (First reminder)

6. Following to the option 2, the system files will be restored to the local disk which will be a single partition by PCClone EX. (Second reminder)

7. Check "Verify before restore" will be recommended. Before executing "system restore", the program will verify the advanced backed up data if they have any error.

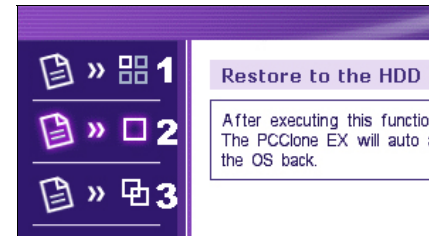
8. The program is processing now after the double confirmation, the window is showing the restore process and calculated complete time.

9. Completed!

10. Remove the USB HDD or turn off the USB HDD power.

11. Press "Y" to restart the computer. (It has successfully completed "system restore".)

The Restoration Options



There are 3 options for partitioning the local disk.

Options 1: The backed up files will be restored to the pre-made active partition.

Options 2: The backed up files will be restored to the whole of hard disk as a single partition.

Options 3: Automatically create 2 partitions and the backed up files will be restored into the first partition. (C Drive: 40% D Drive: 60%)

Options 1

However, how many partitions in your first physical hard disk; after executing this option, all the data in the pre-setup active partition will be deleted by PCClone EX; then restore the OS (backed up files) to this active partition; the other partitions won't be destroyed or deleted.

Such as: there are C, D and E partitions in the hard disk. If the partition C is the Active Partition. After executing this function, all the data in the partition C will be deleted. Then restore the OS (backed up files) to the partition C. The other partitions D and E won't be affected.

Options 2 (Note: All data in the hard disk will be deleted if you execute this option.)

After executing this option, the present data in the physical hard disk will be deleted by PCClone EX including all partitions in the local disk, and the local disk will be automatically created as a single partition; then the operating system (the backed up files) will be restored into this single partition.

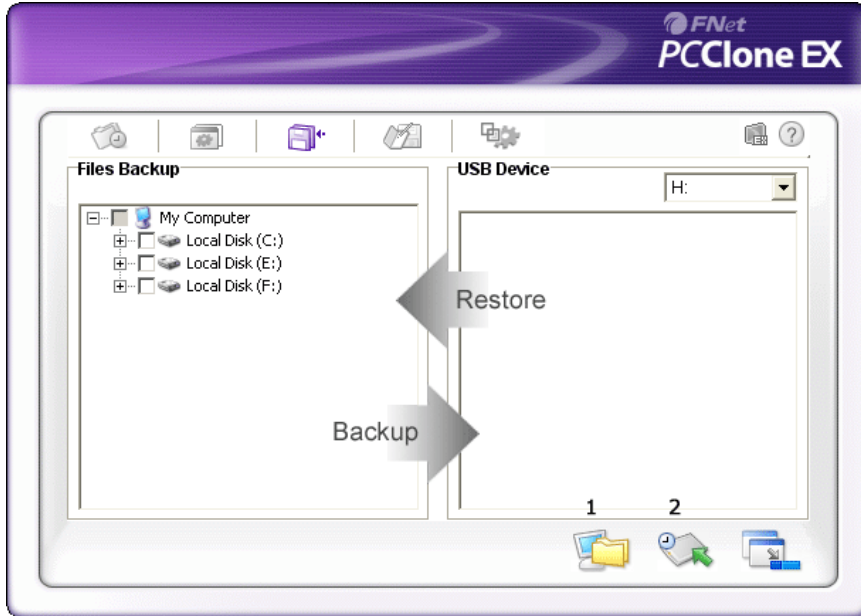
Such as: there are three partitions in the hard disk, such as C/D/E. Execute this option. All data and partitions (C/D/E) will be deleted. And the local disk will be created to be a single partition C. Then, the OS & all the backed up data will be restored to the partition C.

Options 3 (Note: All data in the hard disk will be deleted if you execute this option.)

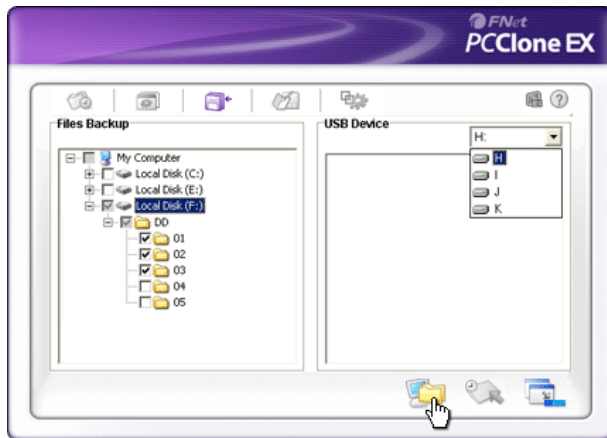
After executing this option, the present data in the physical hard disk will be deleted by PCClone EX including all partitions in the local disk; and the hard disk will be automatically created as 2 partitions; then, the OS (backed up files) will be restored to the first partition; the second partition will be empty. (C Drive: 40%, D Drive: 60%)

Such as: there are 3 partitions in the local disk such as C, D and E. After selecting this option, all the files and partitions C, D, E will be erased by PCClone EX and the local disk will be automatically created as 2 partitions C and D. Then, the OS (backed up files) will be restored into the partition C.

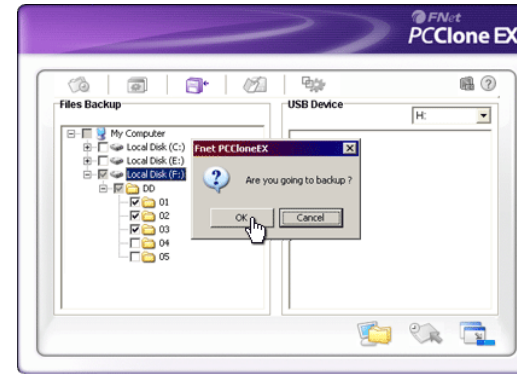
File Backup



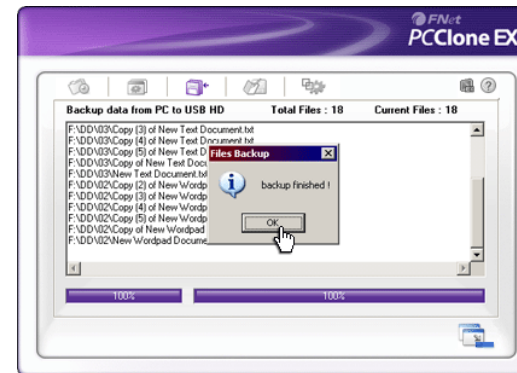
1. File Backup.
2. [File Restore](#).



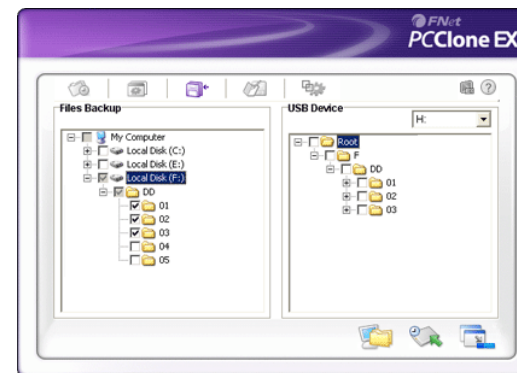
1. Please plug the USB HDD into the computer, and turn on the power.
2. Execute PCClone EX.
3. Click the option of "File backup" .
4. Select folders / USB drives which you are backing up.
5. Select one of USB drives for backing up files.
(If you are a new user, please refer to "[Setup](#)" at the beginning.)



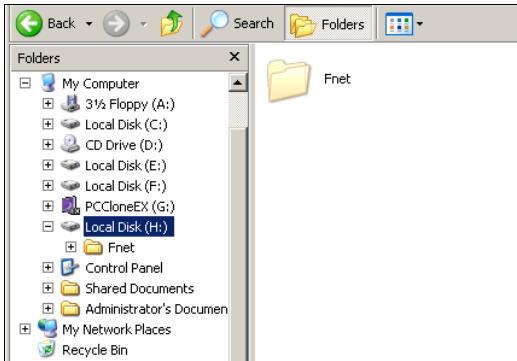
6. Select "Backup" and press "OK" to start.



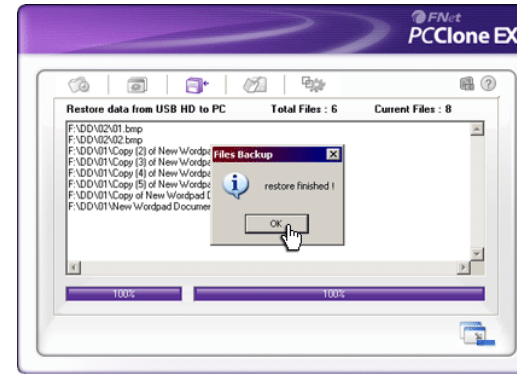
7. The file backup is completed, please press "OK".



8. The selected folders at the local disk have been moved to the USB device successfully.

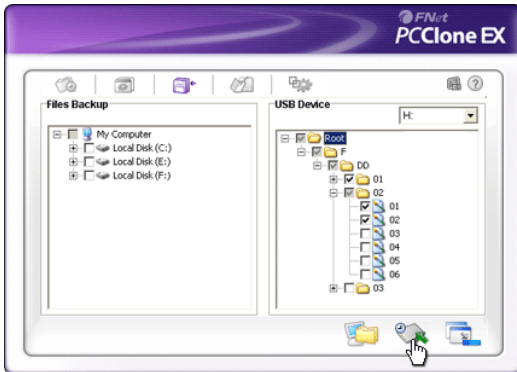


- There is a hidden folder name "FNet" under the USB drive, all the backed up files are kept in there. Be careful, don't delete it carelessly.

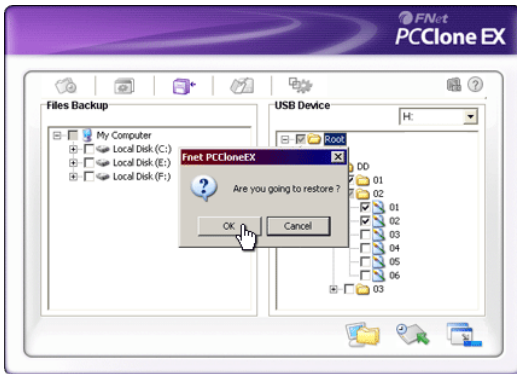


- Finished, please press "OK".

File Restore

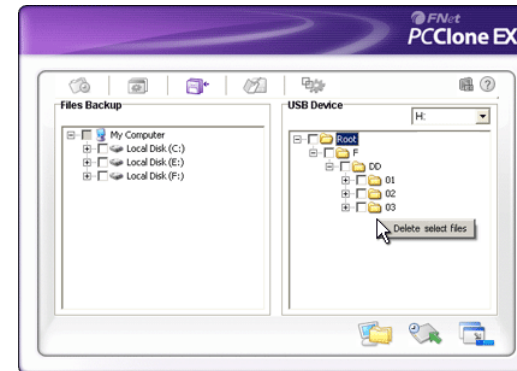


- Plug the USB HDD to the computer, and turn on the power.
- Execute PCClone EX.
- See the PCClone EX interface.
- Click the option of "File Backup".
- Check the tick box in front of folders/files from the USB device you want to restore.

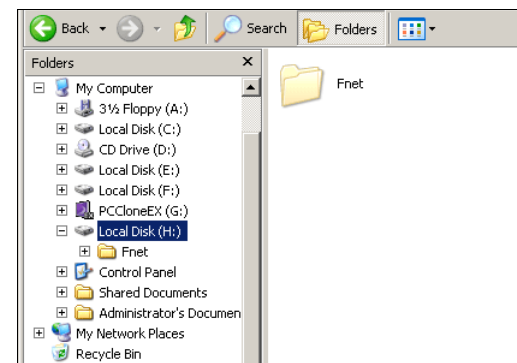


- Click "Restore", then press "OK" to start.

Erase File Backup

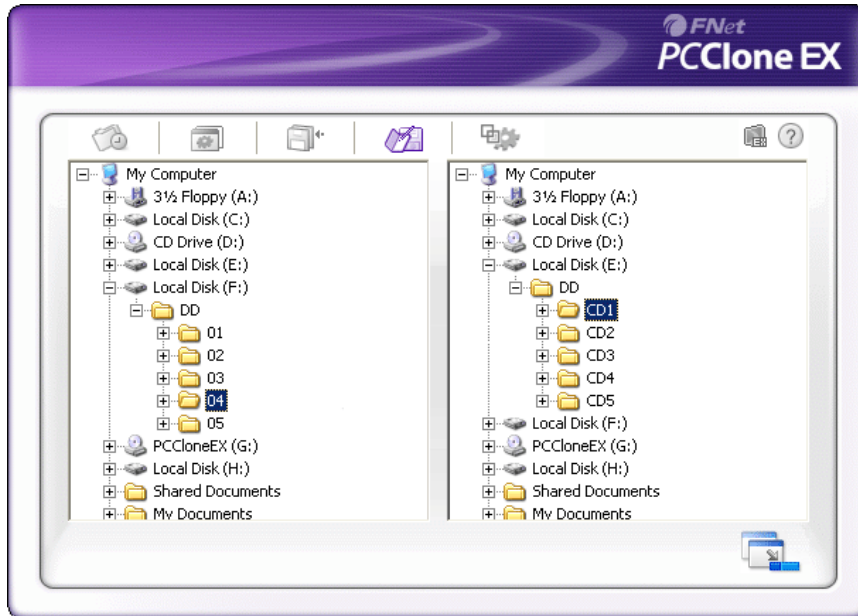


- Plug the USB HDD to the computer, and turn on the power.
- Execute PCClone EX.
- See PCClone EX interface.
- Check folders/files you want to delete at the USB device, and then right-click the mouse and press the "Delete selected file", the selected files will be deleted.



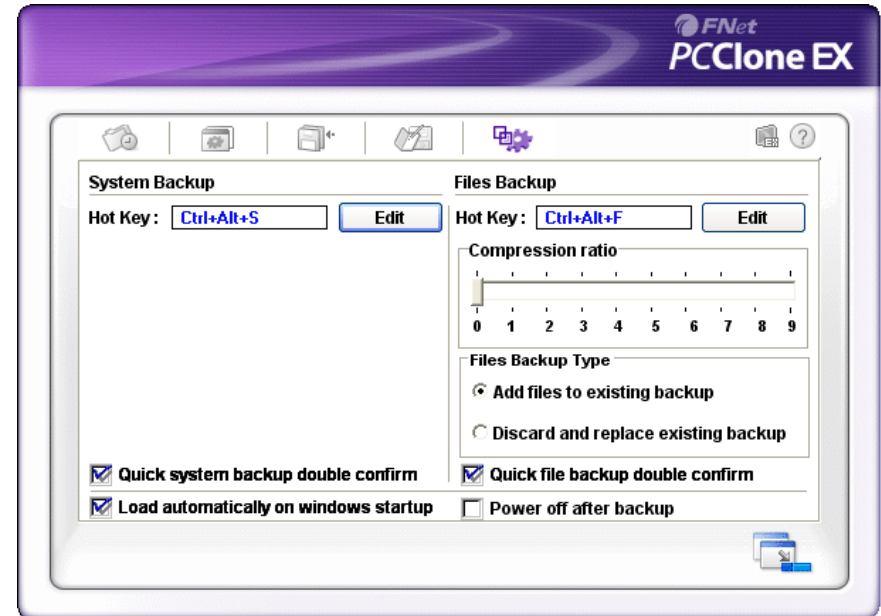
- Otherwise, delete the folder named "FNet" directly.

File Manager



PCClone EX File Manager is the same function as Windows Explorer. Directly cut and paste folders/files between two windows of local and USB HDD. It is convenient for users who can review/manage/ move/access their folders/files directly without clicking the "My computer" or "Windows Explorer".

Setup



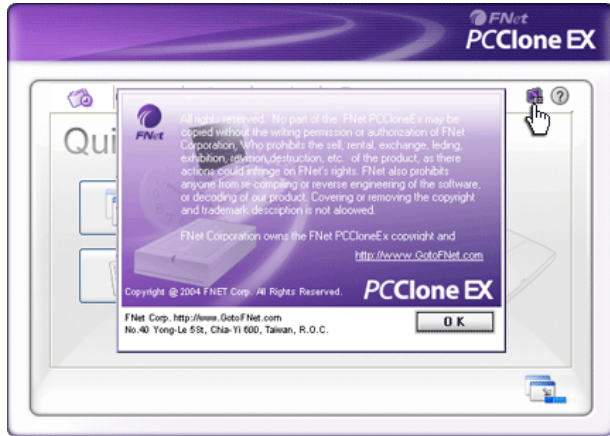
System Backup

Hot Key setup	Click the button of "Edit" and then input any key you want such as "Ctrl" / "shift" / "Alt" / numbers / letters into the highlight column to set a hot key you own which can also be executed the system backup after setting.
Confirmation	The system backup through the hot key will be inquired a double confirmation; If you want to back up directly without a double confirmation, the confirmation default can also be cancelled.

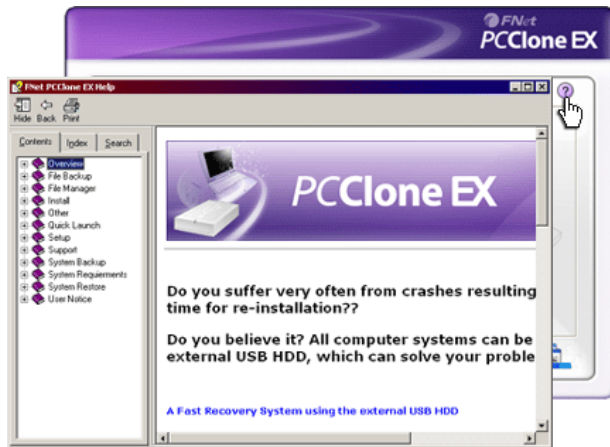
File Backup

Hot Key setup	Click the button of " Edit" and then input any key you want such as "Ctrl" / "shift" / "Alt" / numbers / letters into the highlight column to set a hot key you own which can be also executed the file backup after setting.
Compression ratio	"0" means no compression; the compression rate in sequence is 1~9, the highest compression rate (number 9) makes the backed up files to be the minimum volume, Naturally, the time will spend longer than other rates.
File backup mode	There are two types for file backup, one is "Add files to existing backup" that only backs up additional files to the external USB HDD; the other one is "Discard and replace existing backup" that duplicates all files from your PC to the external USB HDD.
Confirmation	The system backup through the hot key will be inquired a double confirmation; If you want to back up directly without a double confirmation, the confirmation default can also be cancelled.

Other



About the copyright please click the icon of PCClone EX; or right-click the icon of PCClone EX at the notification area.



The specification of PCClone EX please click the icon "?", or right-click the icon of PCClone EX at the notification area.

Technical Support and Services

FNet Corp. is a professional R&D software company. Our software solutions bundled and cooperated with many hardware manufacturers. Therefore, FNet is only in charge of software technical problems and what suggestion you want to give FNet. Please see the contact below. Concerning the hardware problem please kindly connect with hardware manufacturers whose contact please refer to the printing box / the registration card of the hardware commodity.

After Service



Thank you for purchasing FNet's Product. In order to obtain the complete service from FNet, please complete and return the registration card to us, or register on-line. We will use this information to notify you of new product announcements and product upgrades.

Technical Support



For additional information you can visit our website at <http://www.GotoFNet.com>. If you need technical support, please e-mail your questions to service@gotoFNet.com, or fill in [Tech Support Request](#), or our head quarter and branch offices (phone numbers are listed at the last page) for direct assistance. Our professional Customer Support and Technical Support engineers will be glad to provide the service to you.

Contact us

FNet Corp. is a professional R&D software company. Our software solutions bundled and cooperated with many hardware manufacturers. Therefore, FNet is only in charge of software technical problems and what suggestion you want to give FNet. Please see the contact below. Concerning the hardware problem please kindly connect with hardware manufacturers whose contact please refer to the printing box / the registration card of the hardware commodity.

Taiwan

Headquarter
No.40 Yong-Le 5St, Chia-Yi 600, Taiwan.
Tel: +886-5-236-6630
Fax: +886-5-286-2872
<http://www.GotoFNet.com>
fnet@gotofnet.com

Taipei
Room 307, 3F., Building E, No.19-13, Sanchong Rd., Nangang District, Taipei City 115, Taiwan.
Tel: 886-2-2655-2833
Fax: 886-2-2655-2832
<http://www.GotoFNet.com>
taipei@gotofnet.com

China / HongKong

Hong Kong
Tel: +852-81990126
china@gotofnet.com

The line will be automatically transferred to Taiwan, and our Customer Support will serve in Mandarin.

USA

USA
Tel: +1-626-9214633
This phone number will be switched to Taiwan office, please notice the office time from 9:00 A.M. to 6:00 P.M. of Taipei time (GMT +8), it is the same as L.A. 6:00 P.M. ~ 3:00 A.M., N.Y. 9:00 P.M. ~ 6:00 A.M., or email to agnes@gotofnet.com, we will reply ASAP. About technical problem, please fill with our [Tech Support Request](#).

Others

General Information : service@gotofnet.com
Sales Information : sales@gotofnet.com
Customer Service : For product information and customer assistance : service@gotofnet.com
Feedback : We welcome your feedback and suggestions on our products : support@gotofnet.com
Technical Support : For technical support issues, please initiate a : [Tech Support Request](#)
Business Development : Companies or individuals who are interested in partnerships and alliances with FNet, please contact : service@gotofnet.com

Legal Adviser

Wang Zeng-Wan
Yu Jui-Hua