



FNet
CloneDrive

Fast and Easy clone system for hard disks

Manual

Contents

Statement.....	3
Copyright.....	4
System Requirements.....	5
Feature of FNet CloneDrive.....	6
Install.....	7.8
FNet CloneDrive Interface.....	9
FNet CloneDrive Functions.....	10
Clone.....	11.12
Uninstall.....	13
User Q&A.....	14
User Notice.....	15
Contact us.....	16

Statement

- Serial number sticker is a license certificate, please keep it carefully. If you lost this sticker that means software warranty were terminate.
- For secure reason, FNet doesn't have any back door in this software. Please don't forget password that you setup. If you forgot password, original serial number that can help you to find out your password.
- Except in case of improper use, we provide a 1-year guarantee of free service.
- If this product is defective, please return it to the dealer from whom the product was originally purchased, together with your original sales receipt for replacement.
- FNet Co., Ltd. is not liable for any consequential, incidental or indirect damages (including damages for indirect personal injury, loss of business profits, business interruption, loss of business information and the like) arising out of the use or inability to use this product.
- FNet Co., Ltd. will not accept returns of opened packages.

Copyright

- The user is responsible for all results. FNet Co., Ltd owns this product and its relative information; we grant you no right to this product. FNet Co., Ltd. also owns all unauthorized rights in this book.
- All rights reserved. No part of the FNet SecureDrive EX2 may be copied without the writing permission or authorization of FNet Co., Ltd, who prohibits the sell 、 rental 、 exchange 、 lending 、 exhibition 、 revision 、 destruction, etc. of the product, as there actions could infringe on FNet's rights. FNet also prohibits anyone from re-compiling or reverse engineering of the software, or decoding of our product. Covering or removing the copyright and trademark description is not allowed.
- FNet Co., Ltd. owns the FNet SecureDrive EX2's copyright and patent. This product and its manual possess multiplecountries' copyright & patent. The trademarks of FNet SecureDrive EX2 and FNet are registered by FNet Co., Ltd. and Future Net U.S.A. Corporation. MS-DOS 、 Microsoft 、 Windows 7 、 Windows Vista 、 Windows 2003 、 Windows XP 、 Windows 2000 、 Windows NT 、 Windows ME 、 Windows 98 、 Windows 95 、 Windows 3.1 are trademarks of Microsoft Corporation. Other pictures 、 product and company names, mentioned herein may be the trademarks of their respective owners.
- The information in this document is subject to change at anytime without notice. All the product names used herein are own by FNet Co. , Ltd unless otherwise noted.

System Requirements

- Support OS : Windows XP 、 Windows Vista 、 Windows 7
- USB External Hard Disk :
 - 2.5 inch Hard Disk (IDE/SATA/SATA2/SATA3) : Support
 - 3.5 inch Hard Disk (IDE/SATA/SATA2/SATA3) : Support
- Install space : 10 MB
- USB1.1 / USB 2.0 / USB 3.0
- Memory : 128 MB or above

Feature of FNet CloneDrive

Move quickly

CloneDrive not waste time on the backup volume will be blank, a unique linear reading from the hard drive heads to reduce the time driving back and forth, faster copy time.

Defragmentation

While copying data CloneDrive, will your hard disk data, neatly fill a hard drive to another Sector, to defragmentation performance.

Many choices

CloneDrive allows PC copy to the USB external hard drive, USB external hard disk copied to the USB external hard disk, where to copy the hard drives to copy the hard drives where very many choices.

Easy to use

Users only need to install CloneDrive, select your hard drive to copy, then just wait until it finishes, what kind of disk can be copied.

Support GPT

In more than 2TB hard disk, need GPT (GUID Partition Table) by the sector size.CloneDrive support GPT.

Install

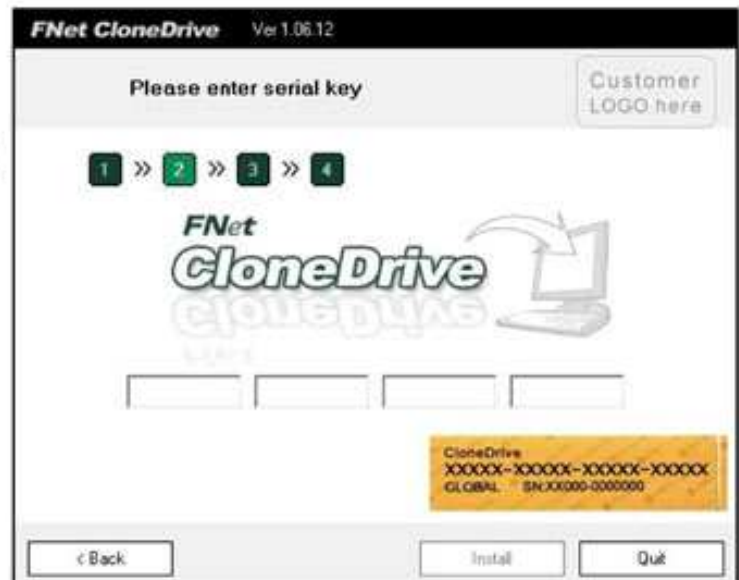
Step 1 :

Insert CloneDrive installation CD , and start up "Setup.exe".



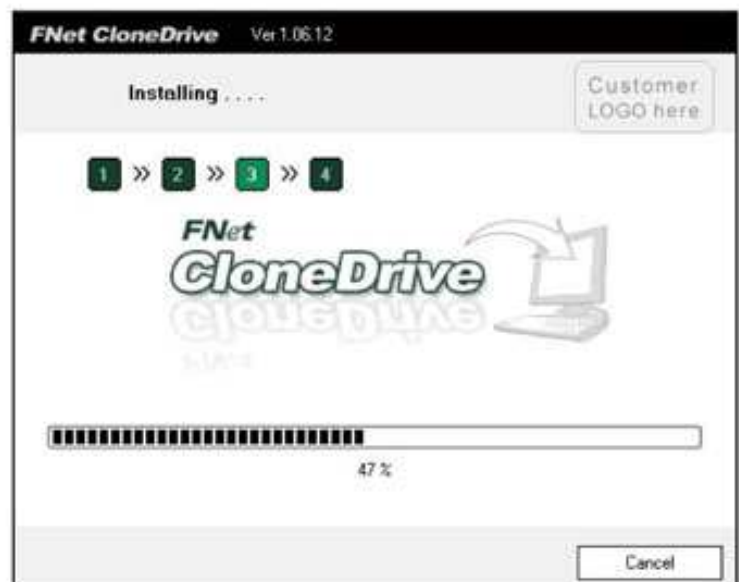
Step 2 :

Click the "Next" before Find out the attached serial key as the yellow label, and key in the serial number correctly. Click " Next" for next step.



Step 3 :

After Starting to install , It will show 『Installing...』 ◦



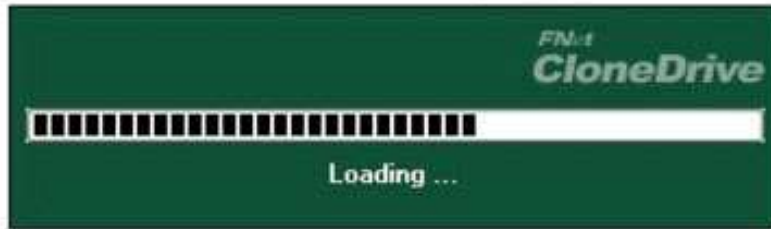
Step 4 :

After the installation, please click 「Done」 button to finish it.



FNet CloneDrive Interface

When start up CloneDrive , It will Loading a Few seconds.



The following picture describes the interface about CloneDrive

1. Clone System disk to external disk
2. Minimized
3. Settings
4. About CloneDrive
5. Help
6. Local hard disk partition status
7. External hard disk partition status
8. Start up copy



FNet CloneDrive Functions

Enable USB Button

Step 1 :

Click the Settings button in the top right of the main screen, setting screen will appear.

Step 2 :

Select "Enable USB Button".

Step 3 :

Chick "Close" button.



Load automatically on windows startup

Step 1 :

Click the Settings button in the top right of the main screen, setting screen will appear.

Step 2 :

Select "Load automatically on windows startup".

Step 3 :

Chick "Close" button.



Clone

Step 1 :

Plug-in external hard Disk, and click "Start" button.

Notice : The destination hard disk capacity, must be greater than the source hard disk capacity, otherwise it will not run clone function.



Step 2 :

The screen will show "Do you want start clone ? ", and click "Start" button.



Step 3 :

When Cloning, CloneDrive will automatically split into the same block, lower left corner of the screen show total time, time elapse, read, write.

Notice : Don't power off or remove USB hard disk, otherwise it will not copy success.



Step 4 :

Clone complete, and click "OK" button.



USB External Hard Disk → USB External Hard Disk

FNet CloneDrive also support external hard disk copy to external hard.



Uninstall

Step 1 :

From “Startup”→“All Programs”
→“Clone Drive”→“Uninstall”,
Start up uninstall.



Step 2 :

It will show 『Uninstalling...』.



Step 3 :

Click “Done” button.



User Q&A

1. Why do I have installed the software, connect the USB external hard disk, but can not begin to copy?

Answer : Copy of the source can not be greater than the destination hard disk capacity, otherwise it will not start copying data.

2. If I connected to two or more external hard disk, why can not select the USB hard disk to USB hard disk.

Answer : CloneDrive will be placed in USB external hard disk as priority, if the user wants to USB hard disk copy to USB hard disk, we suggest using clone external device.

3. I installed FNet CloneDrive, and plug-in the USB external hard disk, FNet CloneDrive USB external hard disk but no show?

Answer : 1. Please confirm USB driver.

2. Unplug external hard disk and plug-in again.

Notice

Before use FNet CloneDrive, make sure whether data of the destination hard disk.

If yes, please backup.

Contact us

- FNet Corp. is a professional R&D software company. Our software solutions bundled and cooperated with many hardware manufacturers. Therefore, FNet is only in charge of software technical problems and what suggestion you want to give FNet. Please see the contact below. Concerning the hardware problem please kindly connect with hardware manufacturers whose contact please refer to the printing box / the registration card of the hardware commodity.

- **Taiwan**

Headquarter

No.40 Yong-Le 5St, Chia-Yi 600, Taiwan.

Tel : +886-5-236 6630

Fax : +886-5-286 2872

<http://www.GotoFNet.com>

fnet@gotofnet.com

- **Chian / Hong Kong**

Tel : +852-81990126

china@gotofnet.com

The line will be automatically transfered to Taiwan, and our Customer Support will serve in Mandarin.

- **USA**

Tel: +1-626-9214633

This phone number will be switched to Taiwan office, please notice the office time from 9:00 A.M. to 6:00 P.M. of Taipei time (GMT +8), it is the same as L.A. 6:00 P.M. ~ 3:00 A.M., N.Y. 9:00 P.M. ~ 6:00 A.M., or email to sales@gotofnet.com , we will reply ASAP.About technical problem, please fill with our Tech Support Request .

- General Informatio : service@gotofnet.com

Sales Information : sales@gotofnet.com

Customer Service :

For product information and customer assistance : support@gotofnet.com